

RESMED

Swift™ LT

NASAL PILLOWS SYSTEM

User Guide

English



Swift™ LT

NASAL PILLOWS SYSTEM

Rx Only

Thank you for choosing the Swift LT.

Intended Use

The Swift LT channels airflow noninvasively to a patient from a positive airway pressure device such as a continuous positive airway pressure (CPAP) or bilevel system.

The Swift LT is:

- to be used by adult patients (> 66 lb/30 kg) for whom positive airway pressure has been prescribed
- intended for single-patient re-use in the home environment and multipatient re-use in the hospital/institutional environment.

Using the Swift LT

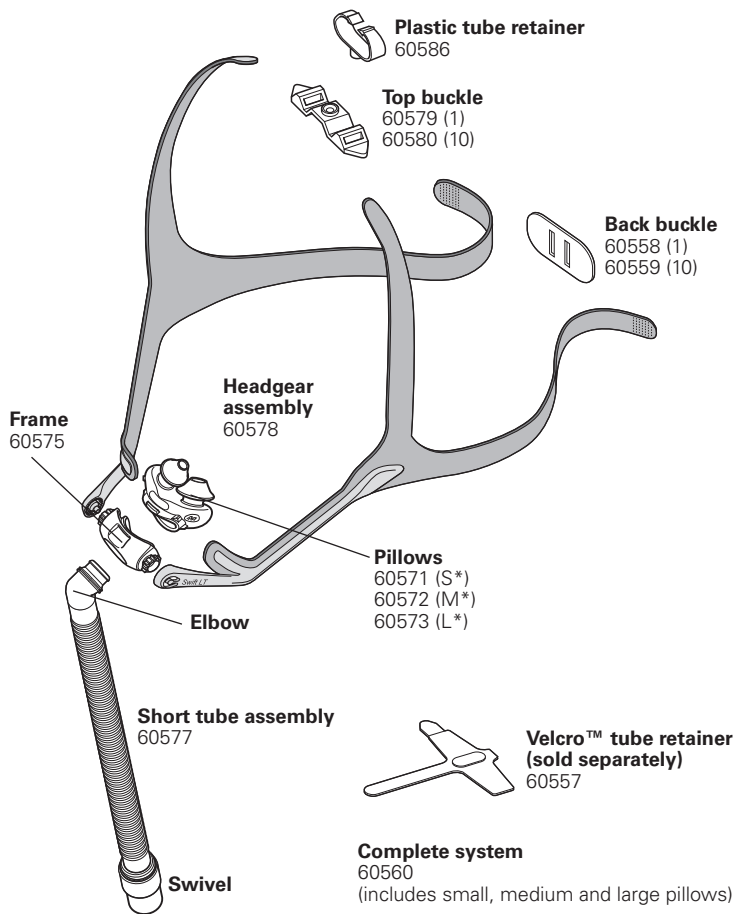
When using the Swift LT with ResMed flow generators that have mask setting options, if available select 'SWIFT'; otherwise select 'MIRAGE' as the mask option.

For a full list of compatible devices for this mask, see the Mask/Device Compatibility List on www.resmed.com on the **Products** page under **Service & Support**. If you do not have internet access, please contact your ResMed representative

Notes:

- *The Swift LT is not compatible for use with ResMed AutoSet CS™ 2 and VPAP™ Adapt SV devices.*
- *SmartStop may not operate effectively when using Swift LT with some flow generators that have this feature.*
- *If you experience nasal dryness or irritation, use of a humidifier is recommended.*

Parts of the Swift LT & Ordering Information



Complete system

60560
(includes small, medium and large pillows)

Frame system

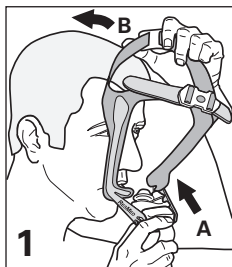
(pillows, frame, short tube assembly)
S* 60582; M* 60583; L* 60584.

Frame assembly

(frame, short tube assembly)
60581

S* Small; M* Medium; L* Large.

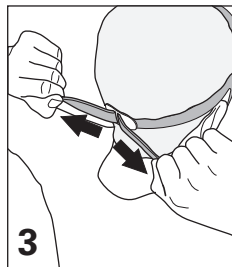
Fitting your Swift LT



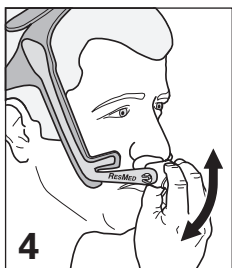
(A) Hold the pillows at your nose; **(B)** pull the headgear over your head.



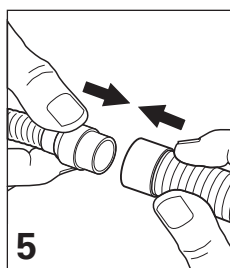
Adjust top straps (overtightening may cause excess pressure on your nose).



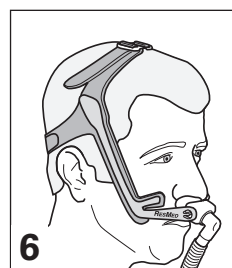
Adjust each end of the backstrap (overtightening may cause excess pressure on upper lip).



Rotate frame to adjust pillow angle to ensure it sits comfortably.

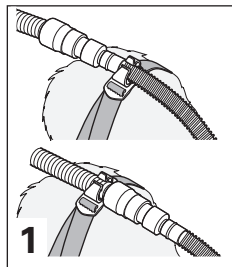


Connect the short tube to the flow generator's air tubing.

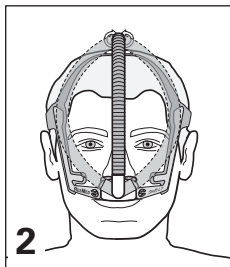


The Swift LT is now fitted and ready for use. Headgear should sit midway between ear and eye.

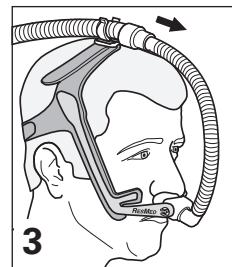
Using the Plastic Tube Retainer (Optional)



Push tube retainer into buckle. Clip either short tube or air tubing to tube retainer.

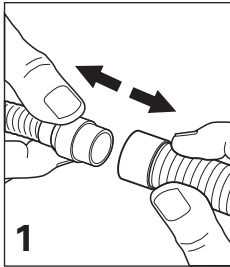


When using the tube retainer, the tubing can be positioned to either side of your face or centered.

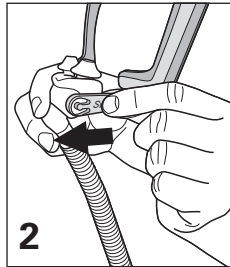


If the mask pulls on your nose, increase length of tube between mask and tube retainer.

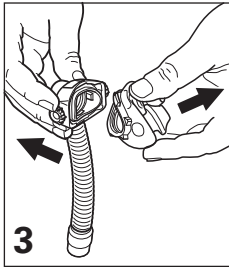
Disassembling your Swift LT



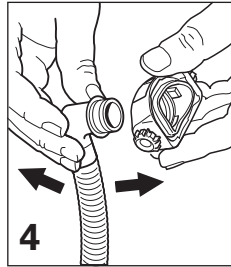
1
Detach air tubing from short tube.



2
Remove headgear from frame.



3
Remove pillows from frame.



4
Remove elbow from frame.

Cleaning your Swift LT in the home

Notes:

- The nasal pillows system and headgear should be cleaned by handwashing.
- The headgear may be washed without being disassembled.



WARNING

Do not use aromatic-based solutions or scented oils (eg, eucalyptus or essential oils), bleach, alcohol or products that smell strongly (eg, citrus) to clean any of the system's components. Residual vapours from these solutions can be inhaled if not rinsed thoroughly. They may also damage the system, causing cracks.



CAUTION

If any visible deterioration of a system component is apparent (cracking, crazing, tears etc.), the component should be discarded and replaced.

Daily/After Each Use

Handwash the separated mask components (excluding headgear) by gently rubbing in warm (approx. 86°F/30°C) water using mild soap for one minute. Rinse all components well with drinking quality water and allow them to air dry out of direct sunlight.

Weekly

Handwash the headgear and tube retainer in warm (approx. 86°F/30°C) water using mild soap. Rinse well and allow them to air dry out of direct sunlight.

Reprocessing your Swift LT between Patients

The Nasal Pillows System should be reprocessed when used between patients. Cleaning, disinfection and sterilization instructions are available from the ResMed website, www.resmed.com/masks/sterilization/americas.

If you do not have Internet access, please contact your ResMed representative.

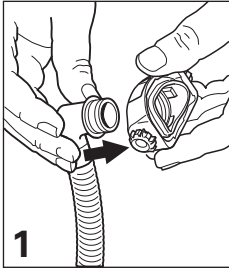
Storage

Ensure that your Swift LT is thoroughly clean and dry before storing it for any length of time. Store the mask in a cool dry place out of direct sunlight.

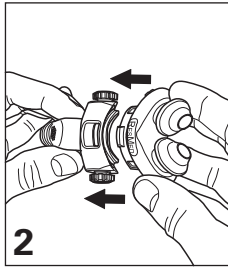
Disposal

The Swift LT does not contain any hazardous substances and may be disposed of with your normal household refuse.

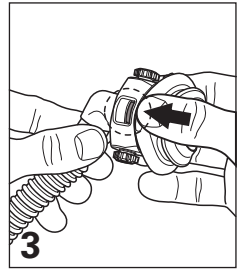
Reassembling your Swift LT



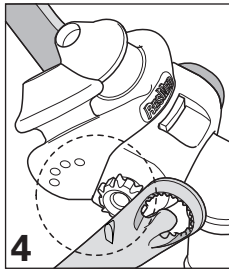
1 Insert elbow into frame.



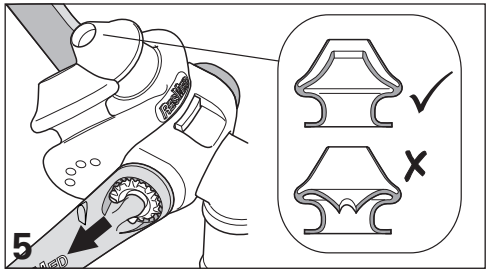
2 Align pillows with frame.



3 Push pillows firmly into frame. Ensure top and bottom retention tabs slot into place.

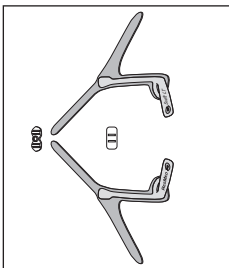


4 Check positioning markers on pillows and headgear are on the same side.

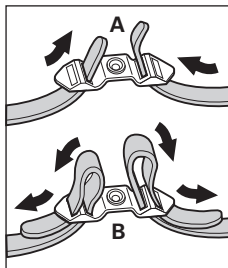


5 Slide left and right headgear stability arms onto frame. Ensure inner wall of pillows is in correct position. If not, squeeze pillow sides to release inner walls.

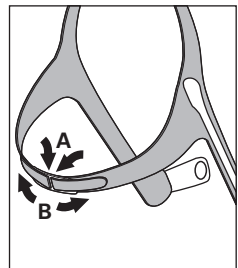
Reassembling the headgear



Lay out the headgear as shown, writing facing upwards.



(A) Thread the top straps through the top buckle, then (B) back over to secure.



(A) Thread both backstraps through the back buckle (Velcro™ facing outwards), then (B) fold back over to secure.

Troubleshooting

Possible reason	Solution
<i>Pillows won't seal properly, are uncomfortable or cause red marks</i>	
Pillows may have been fitted incorrectly, incorrectly adjusted, or the headgear is too tight.	Carefully follow instructions in "Fitting your Swift LT". Check headgear is not over-tightened. Check ResMed logo on top of pillows is facing outwards.
Inner wall position of one/ both pillows is incorrect.	Squeeze pillow sides to release inner wall. The correct position is shown in "Reassembling your Swift LT".
Pillows are wrong size.	Talk to your clinician.
Pillows may be dirty.	Clean pillows according to instructions in "Cleaning your Swift LT in the Home".

Nasal pillows system is too noisy

System is assembled incorrectly.	Reassemble the Swift LT. Make sure the pillows are fully inserted into the frame.
----------------------------------	---

Before using your Swift LT



WARNINGS

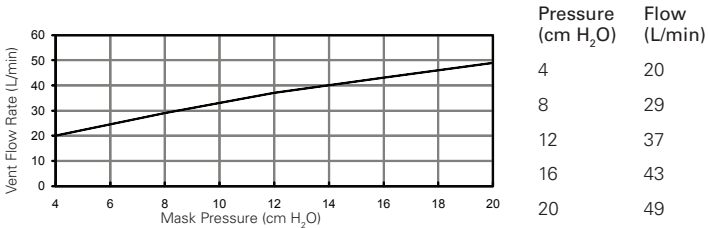
- The vent holes must be kept clear.
- The mask should not be used unless the CPAP system is turned on and operating properly.
- Follow all precautions when using supplemental oxygen.
- Oxygen flow must be turned off when the flow generator is not operating, so that unused oxygen does not accumulate within the flow generator enclosure and create a risk of fire.
- At a fixed flow rate of supplemental oxygen flow, the inhaled oxygen concentration varies, depending on the pressure settings, patient breathing pattern, mask, point of application and leak rate.
- The technical specifications of the mask are provided for your clinician to check that they are compatible with the flow generator. If used outside specification or if used with incompatible devices, the seal and comfort of the mask may not be effective, optimum therapy may not be achieved, and leak, or variation in the rate of leak, may affect the flow generator function.
- Discontinue using the Swift LT if you have ANY adverse reaction to the use of the mask, and consult your physician or sleep therapist.
- As with all masks, some rebreathing may occur at low CPAP pressures.
- Refer to your flow generator manual for details on settings and operational information.
- Remove all packaging before using the mask.

Technical specifications

Note: The mask system does not contain latex, PVC or DEHP materials.

Pressure–Flow Curve

Note: The mask contains passive venting that meets the requirements for protection against rebreathing as specified in ISO 17510-2. As a result of manufacturing variations, the vent flow rate may vary.



Dead Space Information

Physical dead space is the empty volume of the mask to the end of the swivel. Using the large cushions this is 94 mL.

Standards

CE designation in accordance with EC directive 93/42/EEC, class IIa. ISO 14971, ISO 13485, ISO 10993-1 and ISO 17510-2.

Therapy Pressure

4 to 20 cm H₂O.

Resistance

Drop in pressure measured (nominal)
at 50 L/min: 0.6 cm H₂O and at 100 L/min: 2.0 cm H₂O.

Sound

DECLARED DUAL-NUMBER NOISE EMISSION VALUES in accordance with ISO 4871. The A-weighted sound power level of the mask is 25 dBA, with uncertainty 3 dBA. The A-weighted sound pressure level of the mask at a distance of 1 m is 17 dBA, with uncertainty 3 dBA.

Environmental Conditions







Operating temperature: +41°F to 104°F (+5°C to +40°C)
Operating humidity: 15%–95% non-condensing
Storage and transport temperature: -4°F to 140°F (-20°C to +60°C)
Storage and transport humidity: up to 95% non-condensing.

Gross Dimensions

380 mm (H) x 57 mm (W) x 62 mm (D). Mask fully assembled with short tube assembly – no headgear.

Note: The manufacturer reserves the right to change these specifications without notice.

Symbols

⚠ Caution, consult accompanying documents;  Lot number;  Part number;  Temperature limitation;  Humidity limitation;  Does not contain latex;  Indicates a Warning or Caution and alerts you to a possible injury or explains special measures for the safe and effective use of the device.

Limited warranty

ResMed Ltd (hereafter 'ResMed') warrants that your ResMed mask system (including mask frame, cushion, headgear and tubing) shall be free from defects in material and workmanship from the date of purchase for the period of 90 days or in the case of disposable masks the maximum use period. This warranty is only available to the initial consumer. It is not transferable. If the product fails under conditions of normal use, ResMed will repair or replace, at its option, the defective product or any of its components.

This limited warranty does not cover: a) any damage caused as a result of improper use, abuse, modification or alteration of the product; b) repairs carried out by any service organization that has not been expressly authorized by ResMed to perform such repairs; and c) any damage or contamination due to cigarette, pipe, cigar or other smoke.

Warranty is void on product sold, or resold, outside the region of original purchase.

Warranty claims on defective product must be made by the initial consumer at the point of purchase.

This warranty replaces all other expressed or implied warranties, including any implied warranty of merchantability or fitness for a particular purpose. Some regions or states do not allow limitations on how long an implied warranty lasts, so the above limitation may not apply to you.

ResMed shall not be responsible for any incidental or consequential damages claimed to have resulted from the sale, installation or use of any ResMed product. Some regions or states do not allow the exclusion or limitation of incidental or consequential damages, so the above limitation may not apply to you.

This warranty gives you specific legal rights, and you may also have other rights which vary from region to region. For further information on your warranty rights, contact your local ResMed dealer or ResMed office.

Manufacturer:

ResMed Ltd 1 Elizabeth Macarthur Drive Bella Vista NSW 2153 Australia

See www.resmed.com for other ResMed locations worldwide.

Swift LT Nasal Pillows System

Protected by patents: AU 785376, DE 20321468.4, DE 20321469.2, DE 20321470.6, DE 20321471.4, DE 20321472.2, EP 1314445, JP 4354664, NZ 562417, NZ 562418, NZ 562419, NZ 553756, NZ 553757, NZ 553822, NZ 553824, NZ 553825, US 6581594, US 6823865, US 6907882, US 7159587, US 7318437, US 7341060. Other patents pending.

Protected by design registrations: AU 301943, AU 322986, AU 322987, AU 322988, AU 322989, AU 322990, AU 322991, AU 322992, AU 322993, AU 323065, AU 323066, AU 323067, AU 323068, AU 323069, AU 323070, AU 323071, CN 200430102469.3, CN 200830141233.9, CN 200830141234.3, CN 200830141238.1, CN 200830141239.6, CN 200830141242.8, CN 200830141243.2, CN 200830141244.7, EP 966064, JP 1243026, JP 1349550, JP 1351018, JP 1351019, JP 1351020, JP 1351021, JP 1351022, JP 1351023, JP 1351024, JP 1358420, JP 1363098, JP 1363099, JP 1363100, NZ 407161, NZ 411008, NZ 412497, NZ 412498, NZ 412499, NZ 412500, NZ 412501, NZ 412502, NZ 412503, NZ 412504, NZ 412505, NZ 412506US D552731. Others designs pending.

Swift, AutoSet CS and VPAP are trademarks of ResMed Ltd and are registered in U.S. Patent and Trademark Office.

Velcro is a registered trademark of Velcro Industries B.V.



608299/3 17 09

SWIFT LT

USER

AMER ML



6 0 8 2 9 9